



MANDALAY RESOURCES

Costerfield Exploration Update: Figures

April 3, 2018

Forward-looking Statements

This presentation contains "forward-looking statements" within the meaning of applicable securities laws, including statements relating to life of mine production plans, exploration plans and the growth and strategy of Mandalay. Actual results and developments may differ materially from those contemplated by these statements depending on, among other things: exploration results or production results not meeting management's expectations; capital, production and operating cost results not meeting current plans; and changes in commodity prices and general market and economic conditions. The factors identified above are not intended to represent a complete list of the factors that could affect Mandalay. A description of additional risks that could result in actual results and developments differing from those contemplated by forward looking statements in this news release can be found under the heading "Risk Factors" in Mandalay's annual information form dated March 29, 2018 and in its short form base shelf prospectus dated February 12, 2018, copies of which are available under Mandalay's profile at www.sedar.com. Although Mandalay has attempted to identify important factors that could cause actual actions, events or results to differ materially from those described in forward-looking statements, there may be other factors that cause actions, events or results not to be as anticipated, estimated or intended. There can be no assurance that forward-looking statements will prove to be accurate, as actual results and future events could differ materially from those anticipated in such statements. Accordingly, readers should not place undue reliance on forward-looking statements.

Quality Control and Assurance

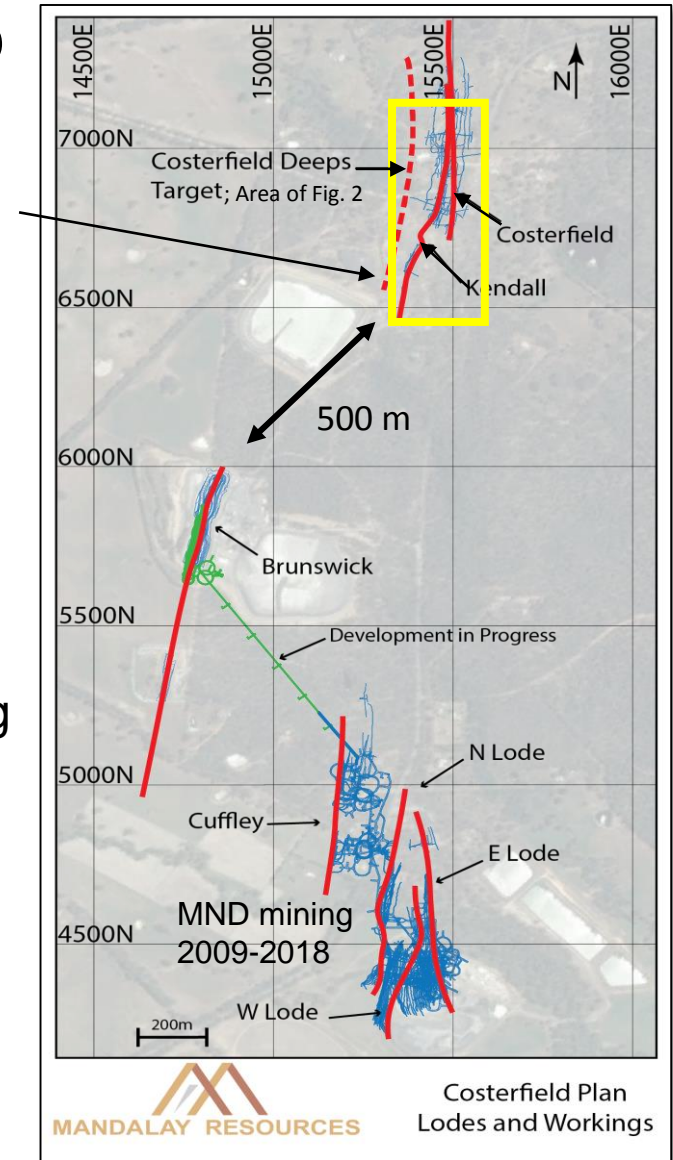
Quality control and assurance programs are implemented in line with the standards of National Instrument 43-101.

The exploration programs at Costerfield are supervised by Chris Gregory (Member, Australian Institute of Geoscientists, VP of Operational Geology for Mandalay and a "Qualified Person" as defined under National Instrument 43-101. Mr. Gregory regularly visits Costerfield and supervises the collection and interpretation of scientific and technical information contained in this presentation.

All currency references in US\$ unless otherwise indicated.

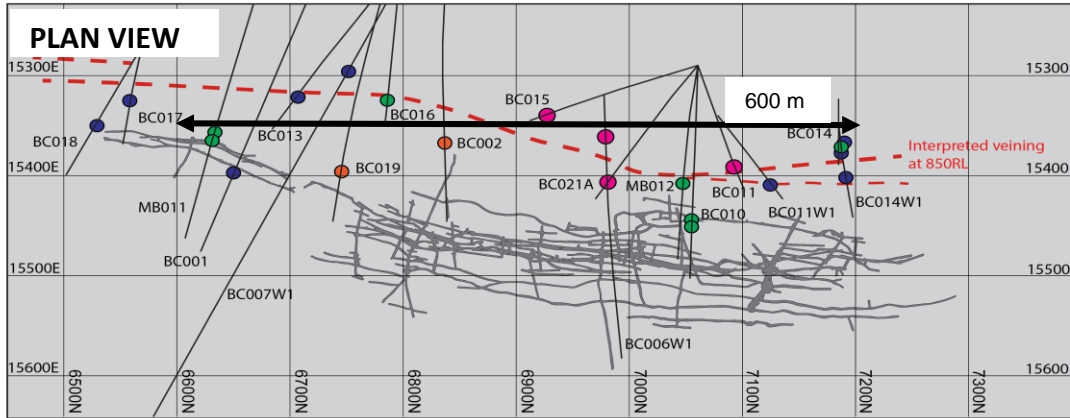
Figure 1: Costerfield District Map

- Historic Costerfield mine lies approximately 500 – 1,000 m north of Brunswick Lode, currently being developed by Mandalay
 - New drill intercepts are from surface drill collars, angled under the historic working
- Mandalay has been mining in the Cuffley, N, E, and W Lodes from 2009-2018
- Mandalay is developing access to the Brunswick Lode as of April 3, 2018, anticipating first ore production in the second quarter of 2018

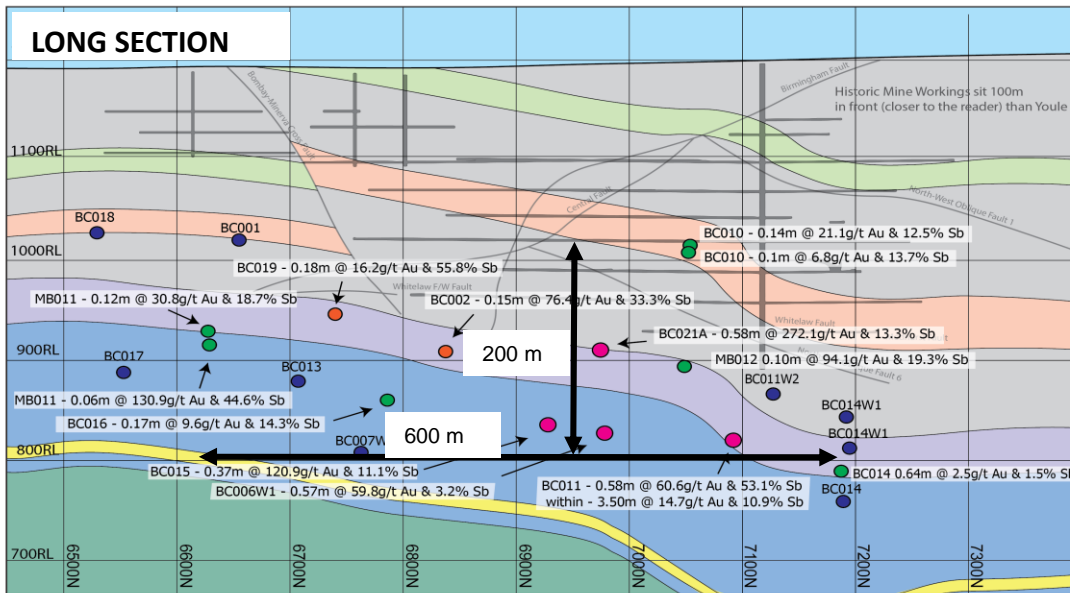


The information contained in these figures is meant to be read in conjunction with Mandalay Resources Corp.'s April 3, 2018 press release

Figure 2: Plan View and Long Section of Drill Intercepts Under the Historic Costerfield Mine

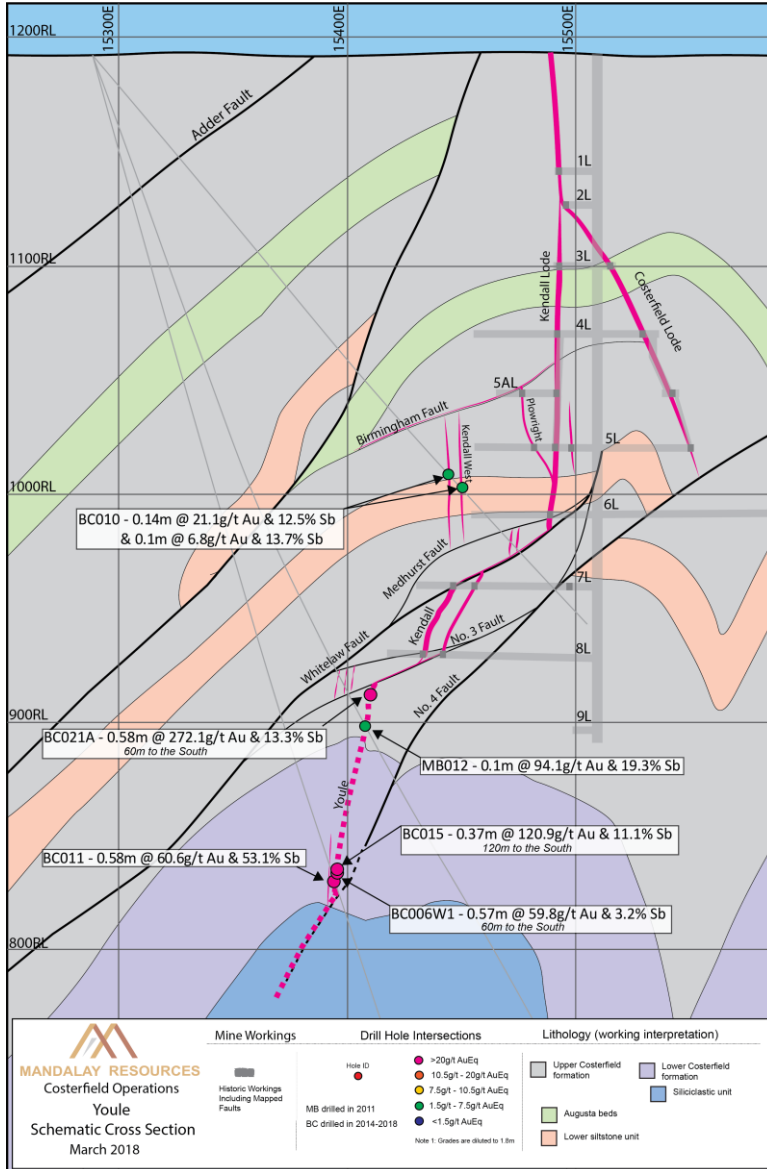


- Mineralized shoot
 - Approx. 600 m strike
 - Approx. 200 m dip
- High-grade core defined by 6 intercepts
 - 400 m x 150 m
 - 50-100 m spacing
 - >10.5 g/t Au Eq over 1.8 m minimum mining width
 - Surrounded by up to 100 m of high-grade, but thinner intercepts that dilute to 1.5-7.5 g/t Au Eq over 1.8 m min. width



The information contained in these figures is meant to be read in conjunction with Mandalay Resources Corp.'s April 3, 2018 press release

Figure 3: Schematic Cross Section of New Drill Intercepts Under the Historic Costerfield Mine



The information contained in these figures is meant to be read in conjunction with Mandalay Resources Corp.'s April 3, 2018 press release